



Instructions for use

hy-drop forte

hygienic liquid dispenser
designed for special
chemical agents

instruments
and
accessories

 polydentia
swiss manufacture 

also available:

REF 5411/V	● 1 Hy-Drop violet + 5 membranes
REF 5411/B	● 1 Hy-Drop blue + 5 membranes
REF 5411/G	● 1 Hy-Drop green + 5 membranes
REF 5411/Y	● 1 Hy-Drop yellow + 5 membranes
REF 5411/O	● 1 Hy-Drop orange + 5 membranes
REF 5415	5 membranes, refill pack

Compatible with aggressive chemical substances:

REF 5412	● 1 Hy-Drop Forte black + 5 membranes
----------	---------------------------------------



For professional use only
REV. 05.09.2021



Polydentia SA

Via Cantonale 47 • 6805 Mezzovico-Vira • Switzerland

Phone +41 91 946 29 48 • Fax +41 91 946 32 03

polydentia.ch • info@polydentia.ch

Made in Switzerland



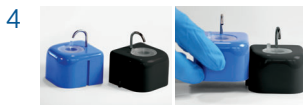
Pour the liquid into the container (max 4ml).



Position the membrane.



Press gently on the membrane.
Hy-Drop releases the liquid drop by drop.



Can be interconnected.



Scan QR for instructions for use &
Cleaning and Sterilization Guide
or go to www.polydentia.ch

Compatible with - Kompatibel mit - Compatible avec - Compatibile con - Compatibile con:

Description	Registered trademark of
ChKM-Lösung	Adolf Haupt & Co. GmbH
Fokaldry	lege artis GmbH
Orthoskavident® C	Kettenbach GmbH & Co. KG
Tubulicid Red Label	Dental therapeutics AB
Tubulicid Blue Label	Dental therapeutics AB
Tubulicid Plus Endo	Dental therapeutics AB
Cavidex	Detax GmbH & Co. KG

en - English

Polydentia does not guarantee compatibility with substances other than those listed in the table.

de - Deutsch

Polydentia garantiert keine Verträglichkeit mit anderen Stoffen als den in der Tabelle aufgeführten.

fr - Français

Polydentia ne garantit pas la compatibilité avec des substances autres que celles énumérées dans le tableau.

it - Italiano

Polydentia non garantisce la compatibilità con sostanze diverse da quelle elencate nella tabella.

es - Español

Polydentia no garantiza la compatibilidad con otras sustancias distintas de las enumeradas en la tabla.